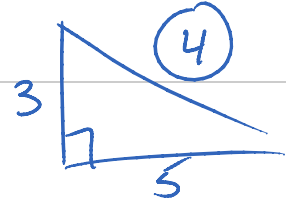


9.6 Notes

Wednesday, February 13, 2013
11:40 AM



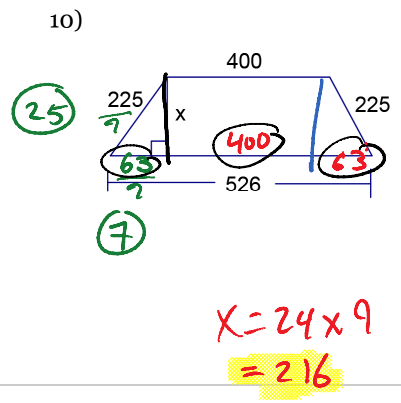
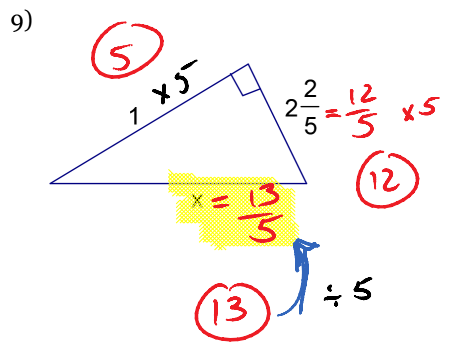
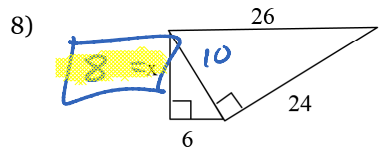
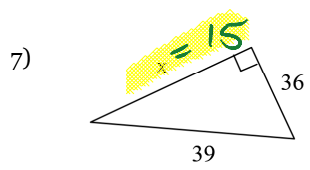
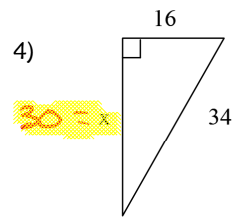
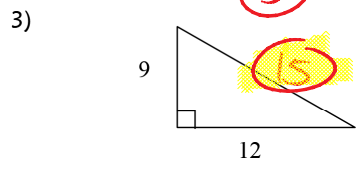
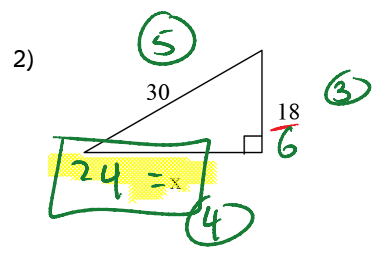
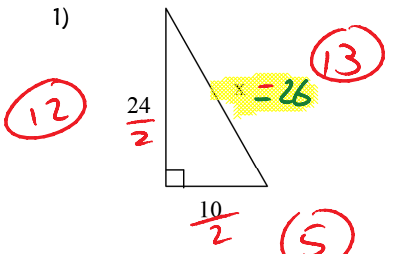
9.6 FAMILIES OF RIGHT TRIANGLES

THE TRIPLES



34, 5	5, 12, 13	7, 24, 25	9, 40, 41
9, 12, 15			
1, 4/3, 5/3	8, 15, 17		

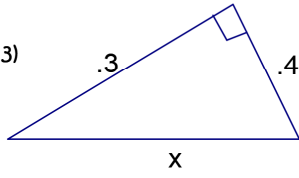
Examples:



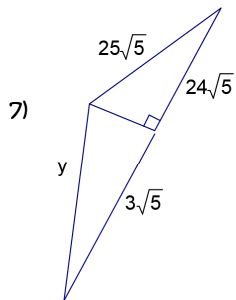
Directions: Find the missing side in triangles below.



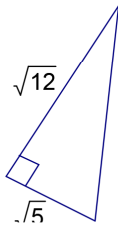
1)



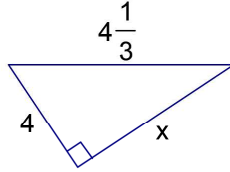
5)



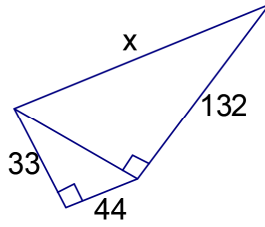
9)



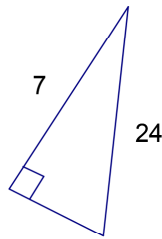
2)



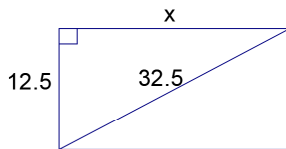
4)



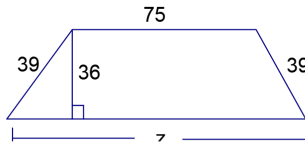
6)



8)



10)



1) _____

2) _____

3) _____

4) _____

5) _____

6) _____

7) _____

8) _____

9) _____

10) _____