

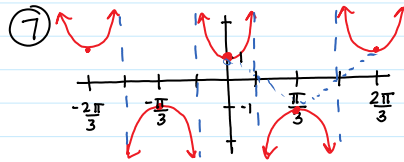
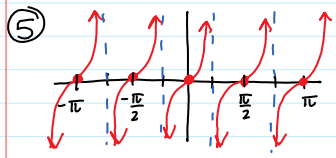
• p. 365) #1-4, 5, 7, 13-16, 24, 27, 28

①  $y_1 = 2 \csc x$   
 $y_2 = \csc x$

②  $y_1 = 5 \tan x$   
 $y_2 = -5 \tan x$

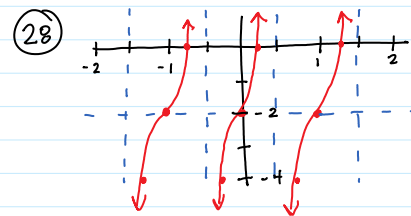
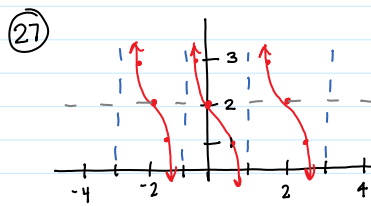
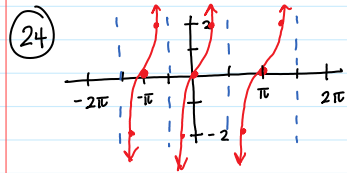
③  $y_1 = 3 \csc 2x$   
 $y_2 = \csc x$

④  $y_1 = \cot(x - 0.5) + 3$   
 $y_2 = \cot x$



⑬ a    ⑭ d    ⑮ c    ⑯ b

$y = \sec 3x \Rightarrow y = \cos 3x$



$\frac{c\pi}{3}$