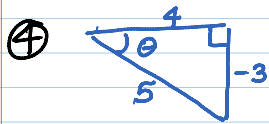


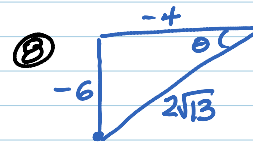
4.3B HW

Thursday, October 23, 2014
8:02 PM

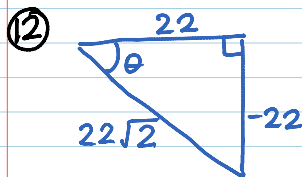
p. 381: 4-48 every other even, 61, 62, 66



$$\begin{aligned}\sin \theta &= -3/5 & \csc \theta &= -5/3 \\ \cos \theta &= 4/5 & \sec \theta &= 5/4 \\ \tan \theta &= -3/4 & \cot \theta &= 4/3\end{aligned}$$



$$\begin{aligned}\sin \theta &= -6/2\sqrt{3} = -3/\sqrt{3} \\ \cos \theta &= -4/2\sqrt{3} = -2/\sqrt{3} \\ \tan \theta &= -6/-4 = 3/2 \\ \csc \theta &= -\sqrt{3}/3 \\ \sec \theta &= -\sqrt{3}/2 \\ \cot \theta &= 2/3\end{aligned}$$



$$\begin{aligned}\sin \theta &= -22/22\sqrt{2} = -1/\sqrt{2} & \csc \theta &= -\sqrt{2} \\ \cos \theta &= 22/22\sqrt{2} = 1/\sqrt{2} & \sec \theta &= \sqrt{2} \\ \tan \theta &= -1 & \cot \theta &= -1\end{aligned}$$

⑩ a) -
b) +
c) -

⑳ -

②④ b

②⑧ $2/\sqrt{2}$

③② 1

③⑥ $\sqrt{3}$

④⑩ a) -1
b) 0
c) und

④④ $\cos \theta = -\sqrt{5}/4$
 $\cot \theta = -\sqrt{5}$

④⑧ $\csc \theta = 5/4$
 $\cot \theta = -3/4$

⑥① true

⑥② true

⑥⑥ A

