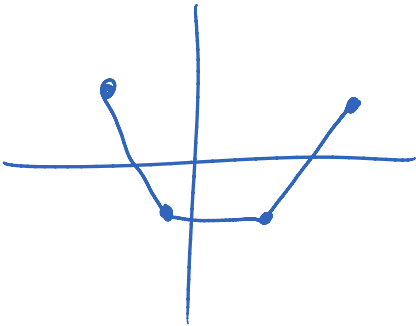
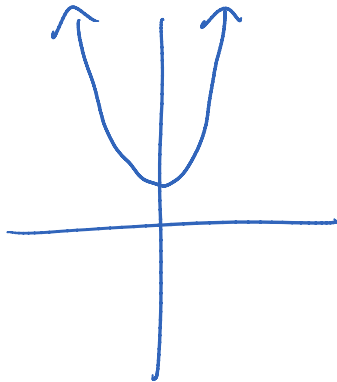


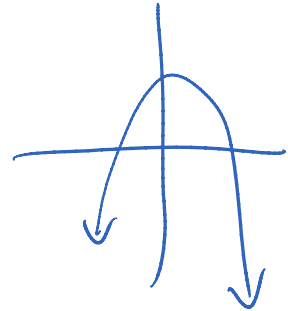
Day 3 Boundness, max/min, Odd/Even



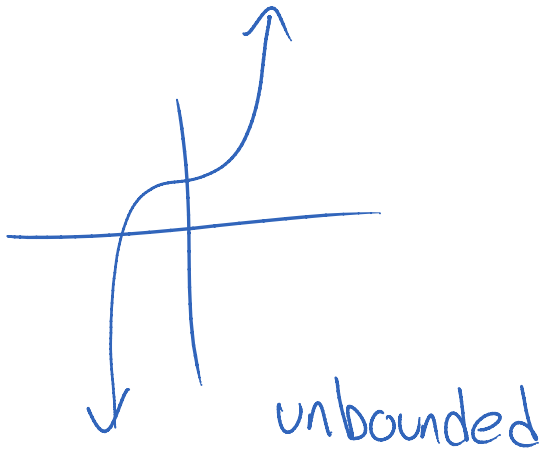
Bounded



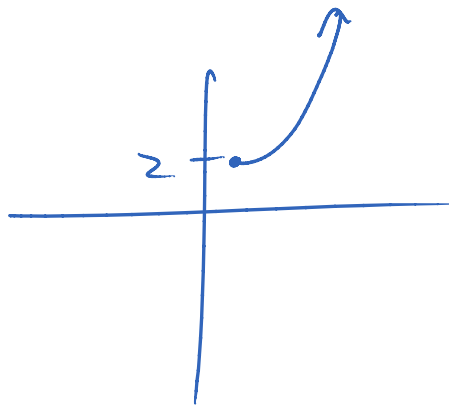
Bounded Below



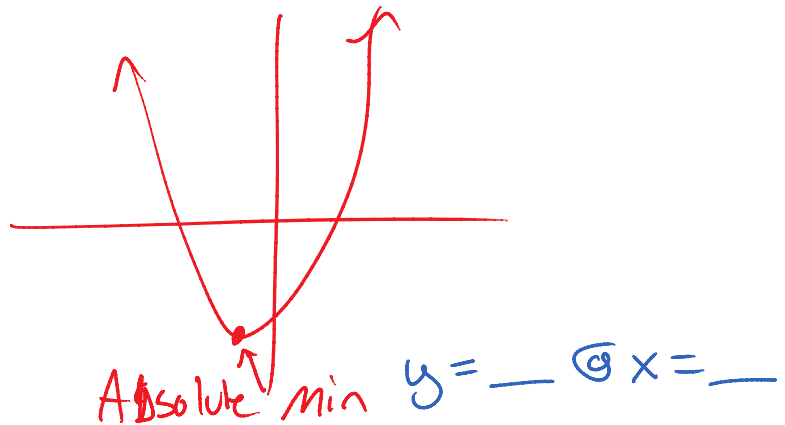
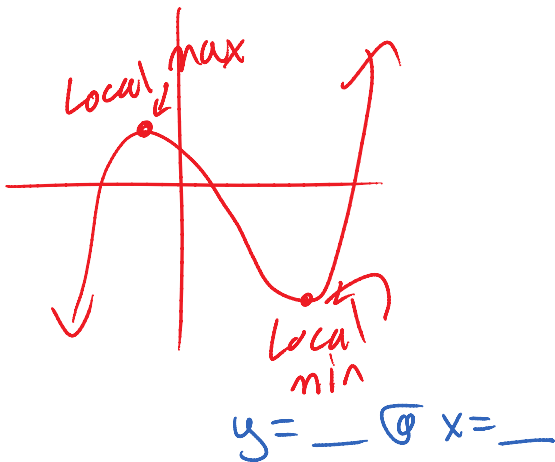
Bounded Above



unbounded



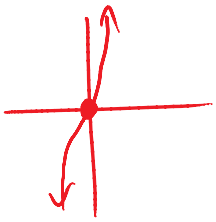
Local Max/min vs. Absolute Max/min



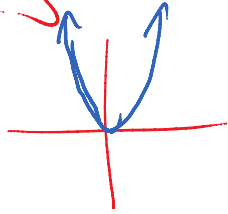
$$y = _ \text{ or } x = _$$

Odd/even/neither

Graphically



Rotate around
origin \rightarrow ODD



Rotate around
y-axis \rightarrow even

Algebraically

Substitute $-x \rightarrow x$

No sign change Even

$$y = x^2 \Rightarrow y = x^2$$

All signs change ODD

$$y = x^3 + x \Rightarrow y = -x^3 - x$$

$$y = (-x)^3 + (-x)$$